

# FREEMAN

8201 West 47th Street  
McCook, IL 60525

(773) 473-7080 • Fax (469) 621-5603

Email: FreemanChicagoES@freeman.com

**ONLINE PRICE**  
**DISCOUNT PRICE**  
**DEADLINE DATE**  
**MARCH 7, 2019**

**INCLUDE THE FREEMAN METHOD OF  
PAYMENT FORM WITH YOUR ORDER**

NAME OF SHOW: **INTL ESTHETICS, COSMETICS & SPA CONFERENCE / MARCH 30 - APRIL 1, 2019**

COMPANY NAME: \_\_\_\_\_ BOOTH #: \_\_\_\_\_

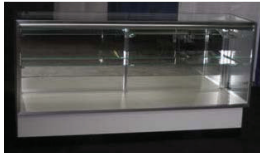
CONTACT NAME: \_\_\_\_\_ PHONE #: \_\_\_\_\_

E-MAIL ADDRESS: \_\_\_\_\_

For Assistance, please call (773) 473-7080 to speak with one of our experts.

For fast, easy ordering, go to [www.freeman.com](http://www.freeman.com)

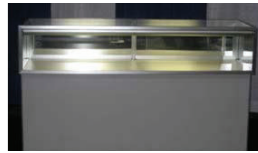
## SHOWCASES



**FULL VISION CASE**



**TOWER CASE**



**QUARTER VISION CASE**



**CORNER VISION CASE**



**WALLCASE**



**HALF VISION CASE**

Qty	Part #	Description	Online Price	Discount Price	Standard Price	Total
<b>FULL VISION CASE</b>						
1-8" & 1-10" Glass Shelf with Adjustable Brackets						
26" High Front Glass Display Section						
Case is 20" Deep						
Available in 4', 5' and 6' lengths						
_____	101043	4'.....	\$376.20	\$413.80	\$526.70	\$ _____
_____	101051	5'.....	\$399.00	\$438.90	\$558.60	\$ _____
_____	101061	6'.....	\$436.55	\$480.20	\$611.15	\$ _____

Qty	Part #	Description	Online Price	Discount Price	Standard Price	Total
<b>QUARTER VISION CASE</b>						
12" High Front Glass Display Section						
Case is 20" Deep						
Available in 4', 5' and 6' lengths						
_____	101044	4'.....	\$376.20	\$413.80	\$526.70	\$ _____
_____	101052	5'.....	\$399.00	\$438.90	\$558.60	\$ _____
_____	101062	6'.....	\$436.55	\$480.20	\$611.15	\$ _____

<b>HALF VISION CASE</b>						
1-10" Glass Shelf with Adjustable Brackets						
18" High Front Glass Display Section						
Case is 20" Deep						
Available in 4', 5' and 6' lengths						
_____	101042	4'.....	\$376.20	\$413.80	\$526.70	\$ _____
_____	101050	5'.....	\$399.00	\$438.90	\$558.60	\$ _____
_____	101060	6'.....	\$436.55	\$480.20	\$611.15	\$ _____

<b>CORNER VISION CASE</b>						
Includes Rear Access and Glass Shelves						
Case is 20" Deep						
Available in Full, Half, and Quarter Sizes						
*Cases on the sides in picture above are not included						
_____	101091	Full.....	\$436.55	\$480.20	\$611.15	\$ _____
_____	101090	Half.....	\$398.90	\$438.80	\$558.45	\$ _____
_____	101092	Quarter.....	\$398.90	\$438.80	\$558.45	\$ _____

<b>TOWER CASE</b>						
Dimensions are 20"L x 20"D x 80"H						
3 Glass Shelves						
Lights						
Locks						
Available in 20 x 20 Square Only						
_____	1010200	20 x 20.....	\$436.55	\$480.20	\$611.15	\$ _____

<b>WALLCASE</b>						
Dimensions are 48"L x 20"D x 72" H						
(4) 12" Glass Shelves						
Adjustable Brackets						
Lights						
Locks						
60" High Sliding Glass Doors						
Available in See-Thru (pictured above) and Solid						
_____	1010203	Solid.....	\$436.55	\$480.20	\$611.15	\$ _____
_____	1010204	See-Thru.....	\$436.55	\$480.20	\$611.15	\$ _____

- All showcases are 20"D x 38"H, have lights, locks, sliding mirror doors, gray exterior, and off-white interior aluminum frames.
- All keys must be left with the showcase or a charge of \$10.00 will be assessed.
- Electrical services are **NOT** included. Please order the electrical service from the electrical contractor.

### TOTAL COST

Sub-Total \_\_\_\_\_ + Tax (9%) \_\_\_\_\_ = TOTAL \_\_\_\_\_

